

XPU Series



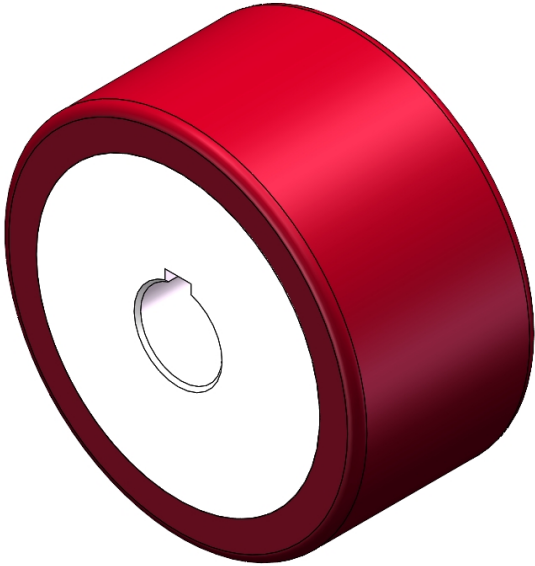
Wheel Diameter × Wheel Width 110 x 56mm

EAN

YJ-12036354230103

Excellent Mechanical Properties, maintaining Heavy Load during high-speed movement; good wear resistance; not easily deformed.
Excellent resistance to chemicals, solvents, and corrosion.
Suitable for Forklift Trucks, Electric Stackers, Heavy duty machines, AGVs, and automated industrial applications.
XPU, wine red

Wheel Center: Iron core
Wheel Tread: High-quality polyurethane



Picture may differ from original product

Product descriptions are for reference only. The actual product shall prevail.

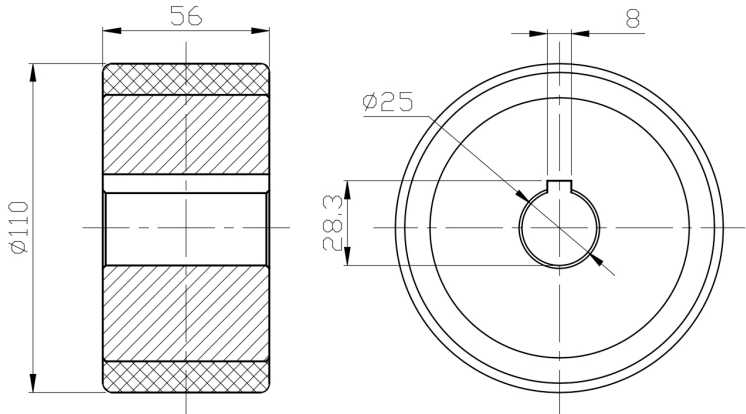
Technical Data

<input checked="" type="radio"/> Imperial <input type="radio"/> Metric	
Wheel Diameter (D)	4-3/8
Wheel Width (T2)	2-1/4
Wheel installation — Hub Lenth (T1)	—
Wheel Mounting Bore Diameter	1 "
Keyway Width	3/8 "
Wheel Keyway Depth (H)	28.3
Load Capacity (Static)	1488lbs
Load Capacity at 4 km/h	992lbs
Load Capacity at 6 km/h	843lbs
Load Capacity at 10 km/h	694lbs
Load Capacity at 16 km/h	397lbs
Hardness Of Tread	92±5° Shore A
Temperature	-4°F to +158°F
Tread Pattern	—
Wheel centre/ rim	Cast iron / spray-baked black paint
Non-Marking	Y
Conductive	N/A
Anti	N/A
Weight	6.0lbs
Standard	ISO22883

Advantages at a glance

Rolling Resistance	● ● ● ● ●
Operating Noise	● ● ● ● ●
Floor Surface Preservation	● ● ● ● ● ○

2D Dimensional Drawing of Drive Wheel



* For any deviation between metric and imperial spec, please refer to the metric spec.