



QPU Series

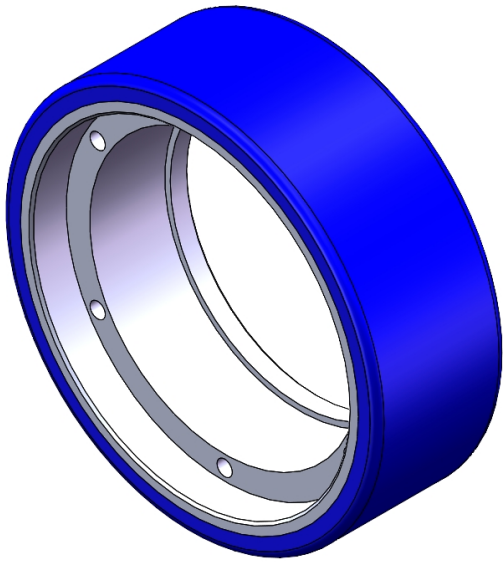
Wheel Diameter × Wheel Width 160 x 55mm

EAN

YJ-12036356230103

It has good elasticity, reduces pushing resistance, improves machine controllability, and has good wear resistance.
It has excellent Hydrolysis Resistance.
Suitable for tropical regions and humid working environments.
QPU Blue

Wheel Center: Iron core
Wheel Tread: High-quality polyurethane



Picture may differ from original product

Product descriptions are for reference only. The actual product shall prevail.

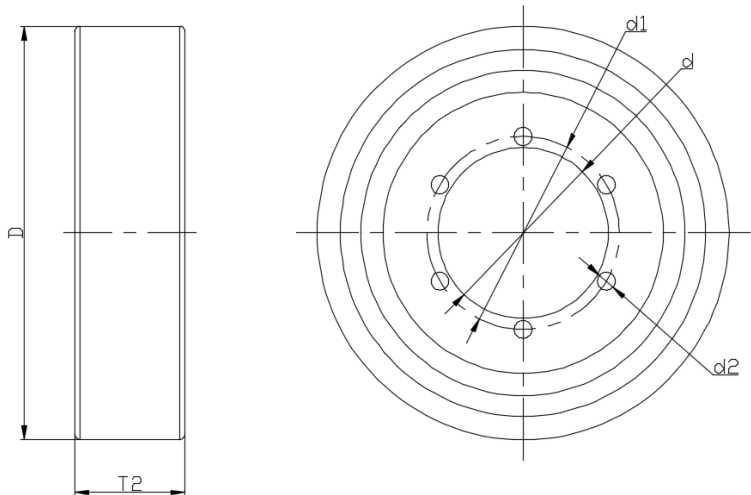
Technical Data

<input checked="" type="radio"/> Metric <input type="radio"/> Imperial	
Wheel Diameter (D)	160mm
Wheel Width (T2)	55mm
Wheel installation — Hub Lenth (T1)	—
Wheel center-bore diameter (d)	115mm
Wheel Mounting Bolt Hole PCD Diameter	6.5mm
Wheel Mounting Bolt Hole PCD	125mm
# Of Wheel mounting bolt boles	6
Wheel mounting bolt hole (M)	—
Number of wheel mounting bolt holes	—
Load Capacity (Static)	825kgs
Load Capacity at 4 km/h	550kgs
Load Capacity at 6 km/h	467.5kgs
Load Capacity at 10 km/h	385kgs
Load Capacity at 16 km/h	220kgs
Hardness Of Tread	87±5° Shore A
Temperature	-20°C to +70°C
Tread Pattern	—
Wheel centre/ rim	Zinc plating
Non-Marking	Y
Conductive	N/A
Anti	N/A
Weight	2.29kgs
Standard	ISO22883

Advantages at a glance

Rolling Resistance	• • • • •
Operating Noise	• • • • •
Floor Surface Preservation	• • • • •

2D Dimensional Drawing of Drive Wheel



* For any deviation between metric and imperial spec, please refer to the metric spec.