



QPU Series

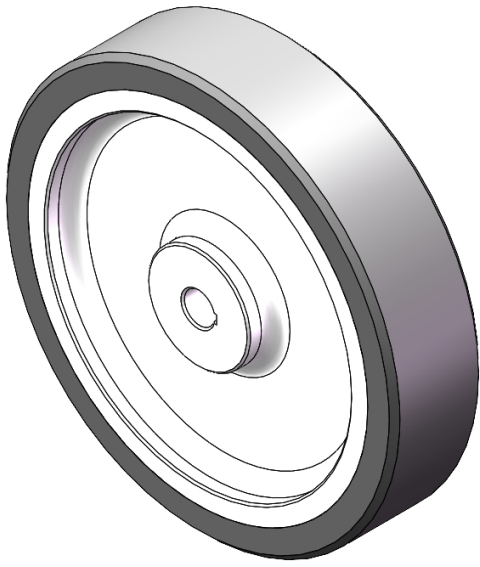
Wheel Diameter × Wheel Width 220 x 50mm

EAN

YJ-12036358200203

Good elasticity, reduces pushing resistance, improves machine controllability, and has good wear resistance.
Excellent Hydrolysis Resistance.
Suitable for tropical regions and humid working environments.
QPU gray surface with machined random texture.
Increases grip on the ground, effectively improving anti-slip ability.

Wheel Center: Iron core
Wheel Tread: High-quality polyurethane



Picture may differ from original product

Product descriptions are for reference only. The actual product shall prevail.

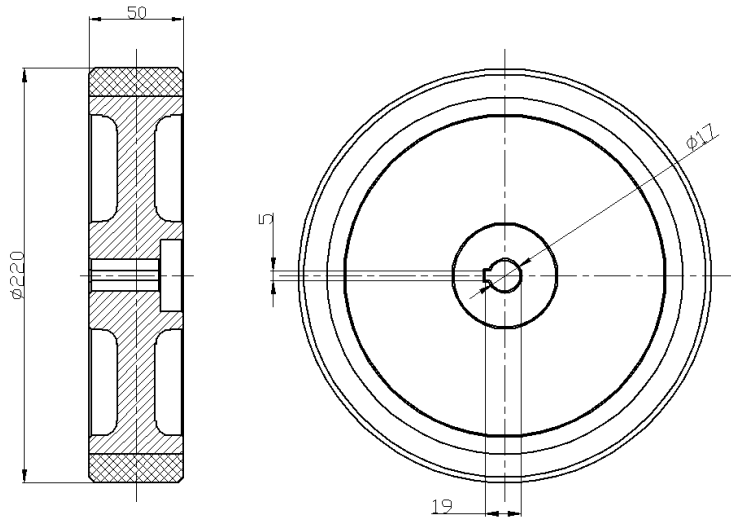
Technical Data

<input checked="" type="radio"/> Imperial <input type="radio"/> Metric	
Wheel Diameter (D)	8-3/4
Wheel Width (T2)	2 "
Wheel installation — Hub Lenth (T1)	2 "
Wheel Mounting Bore Diameter	11/16 "
Keyway Width	1/4 "
Wheel Keyway Depth (H)	19
Load Capacity (Static)	1984lbs
Load Capacity at 4 km/h	1323lbs
Load Capacity at 6 km/h	1124lbs
Load Capacity at 10 km/h	926lbs
Load Capacity at 16 km/h	240kgs
Hardness Of Tread	77±5° Shore A
Temperature	-4°F to +158°F
Tread Pattern	乱码纹
Wheel centre/ rim	Iron core/galvanized
Non-Marking	Y
Conductive	N/A
Anti	N/A
Weight	15.3lbs
Standard	ISO22883

Advantages at a glance

Rolling Resistance	● ● ● ● ●
Operating Noise	● ● ● ● ●
Floor Surface Preservation	● ● ● ● ●

2D Dimensional Drawing of Drive Wheel



* For any deviation between metric and imperial spec, please refer to the metric spec.