



QPU Series

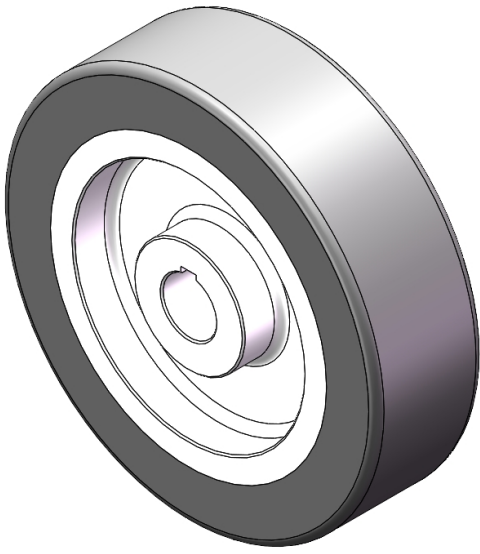
Wheel Diameter × Wheel Width 245 x 70mm

EAN

YJ-12036359280103

It has good elasticity, reduces pushing resistance, improves machine controllability, and has good wear resistance.
It has excellent Hydrolysis Resistance.
Suitable for tropical regions and humid working environments.
QPU Gray

Wheel Center: Iron core
Wheel Tread: High-quality polyurethane



Picture may differ from original product

Product descriptions are for reference only. The actual product shall prevail.

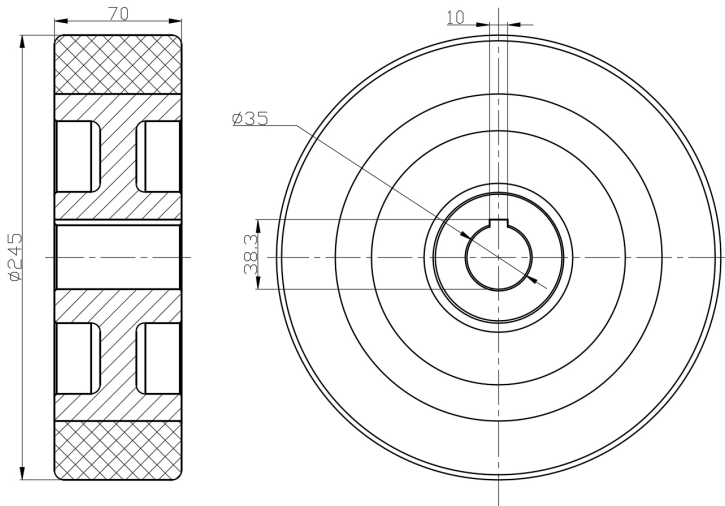
Technical Data

<input checked="" type="radio"/> Imperial <input type="radio"/> Metric	
Wheel Diameter (D)	9-3/4
Wheel Width (T2)	2-13/16 "
Wheel installation — Hub Lenth (T1)	2-13/16 "
Wheel Mounting Bore Diameter	1-3/8 "
Keyway Width	3/8 "
Wheel Keyway Depth (H)	38.3
Load Capacity (Static)	5291lbs
Load Capacity at 4 km/h	3527lbs
Load Capacity at 6 km/h	2998lbs
Load Capacity at 10 km/h	2469lbs
Load Capacity at 16 km/h	1411lbs
Hardness Of Tread	77±5° Shore A
Temperature	-4°F to +158°F
Tread Pattern	—
Wheel centre/ rim	Iron core/galvanized
Non-Marking	Y
Conductive	N/A
Anti	N/A
Weight	20.1lbs
Standard	ISO22883

Advantages at a glance

Rolling Resistance	• • • • •
Operating Noise	• • • • •
Floor Surface Preservation	• • • • •

2D Dimensional Drawing of Drive Wheel



* For any deviation between metric and imperial spec, please refer to the metric spec.