

XPU Series



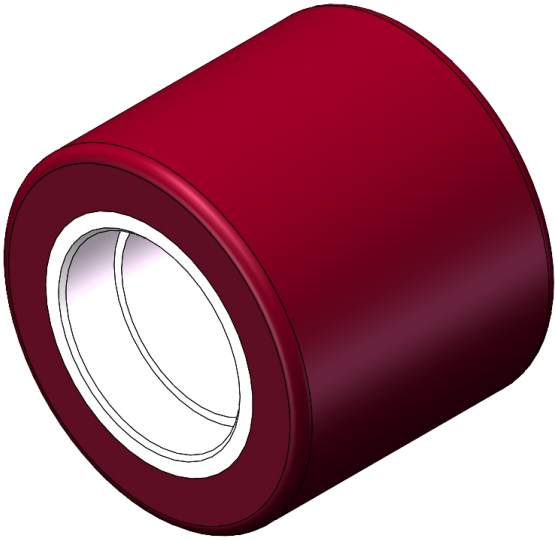
wheel diameter × wheel width 82 x 70mm

YJ-12036403286201

It has excellent Mechanical Properties, can maintain high loads at high speeds, has good wear resistance, and is not easily deformed.  
It has excellent resistance to chemicals, solvents, and corrosion.  
It is suitable for Forklift Trucks, Electric Stackers, Heavy duty machines, AGVs, and automated vehicles.  
XPU Burgundy

Wheel Tread: cast iron core  
Wheel Center: High-quality polyurethane  
Bearing: —

Drawings are for reference only and may differ from the product



Picture may differ from original product

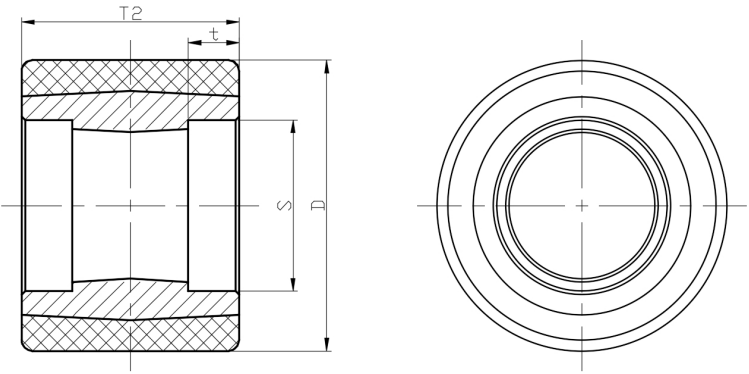
Technical Data

<input checked="" type="radio"/> Metric <input type="radio"/> Imperial	
Wheel Diameter(D)	82mm
Wheel Width(T2)	70mm
Wheel Bearing	Without Bearing
Axle Bore(d)	
Axle Bore(S)	47mm
Bearing Bore Depth(t)	14mm
Hardness Of Tread	92±5° Shore A
Load Capacity (Dynamic)	570kgs
Load Capacity (Static)	855kgs
Temperature	-20°C to +70°C
Electrical Conductivity	N/A
Anti-Static	N/A
Weight	0.9kgs
Standard	ISO22883

Advantages at a glance

Rolling Resistance	● ● ● ○ ○
Operating Noise	● ● ● ● ○
Floor Surface Preservation	● ● ● ● ○

2D Dimensional Drawing of Single Wheel



\* For any deviation between metric and imperial spec, please refer to the metric spec.