

XPU Series



wheel diameter × wheel width 75 x 114mm

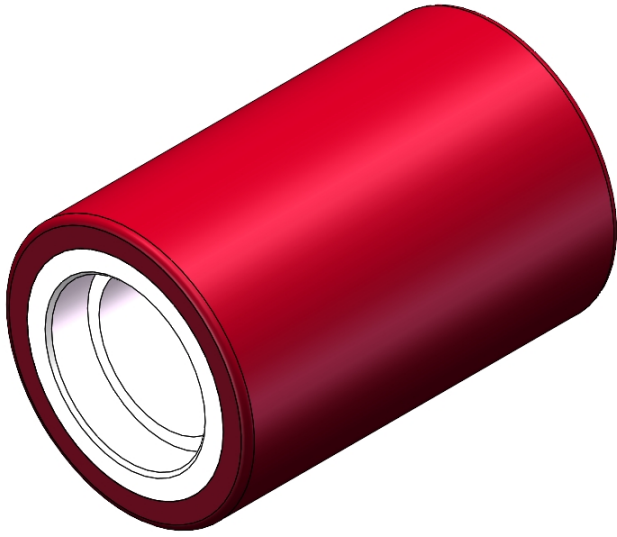
EAN

YJ-12036403480103

It possesses excellent Mechanical Properties, maintaining Heavy Load during high-speed movement, exhibiting good wear resistance, and is not easily deformed. It has excellent resistance to chemicals, solvents, and corrosion. Suitable for Forklift Trucks, Electric Stackers, Heavy duty machines, AGVs, and automated industrial applications. XPU Burgundy

Wheel Center: Iron core
Wheel Tread: High-quality polyurethane
Bearings: —

Drawings are for reference only and may differ from the product



Picture may differ from original product

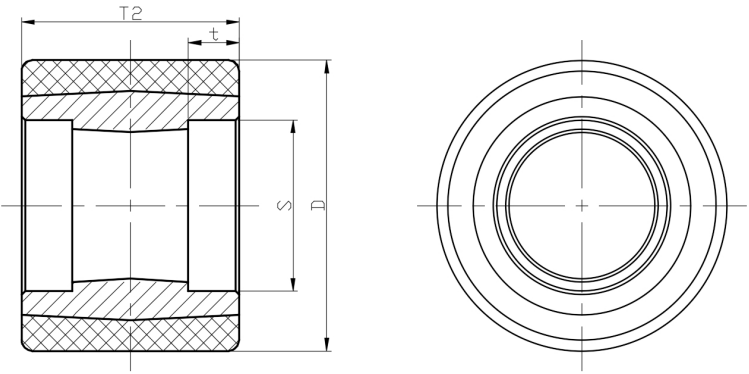
Technical Data

<input checked="" type="radio"/> Imperial <input type="radio"/> Metric	
Wheel Diameter(D)	3 "
Wheel Width(T2)	4-1/2
Wheel Bearing	Without Bearing
Axle Bore(d)	—
Axle Bore(S)	1-7/8 "
Bearing Bore Depth(t)	1/2 "
Hardness Of Tread	92±5° Shore A
Load Capacity (Dynamic)	1411lbs
Load Capacity (Static)	2116lbs
Temperature	-4°F to +158°F
Electrical Conductivity	Y
Anti-Static	Y
Weight	3.4lbs
Standard	ISO22883

Advantages at a glance

Rolling Resistance	● ● ● ○ ○
Operating Noise	● ● ● ● ○
Floor Surface Preservation	● ● ● ● ○

2D Dimensional Drawing of Single Wheel



* For any deviation between metric and imperial spec, please refer to the metric spec.