

XPU Series



Wheel Diameter × Wheel Width 85 x 90mm

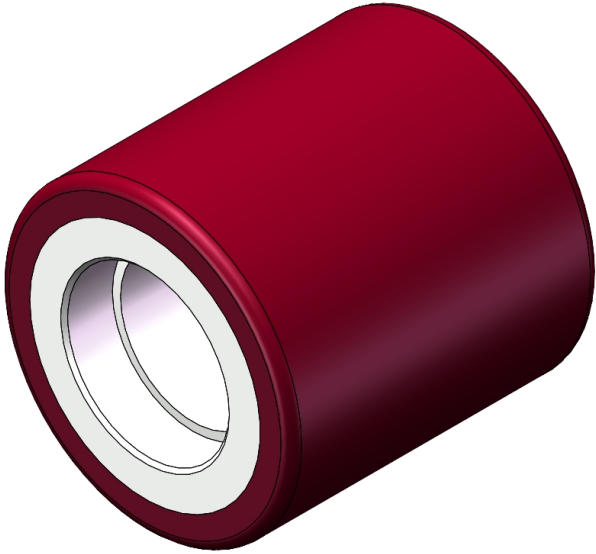
EAN

YJ-12036453386101

It has excellent Mechanical Properties, can maintain high loads at high speeds, has good wear resistance, and is not easily deformed.  
It has excellent resistance to chemicals, solvents, and corrosion.  
It is suitable for Forklift Trucks, Electric Stackers, Heavy duty machines, AGVs, and automated vehicles.  
XPU Burgundy

Wheel Tread: cast iron core  
Wheel Center: High-quality polyurethane  
Bearing: —

Drawings are for reference only and may differ from the product



Picture may differ from original product

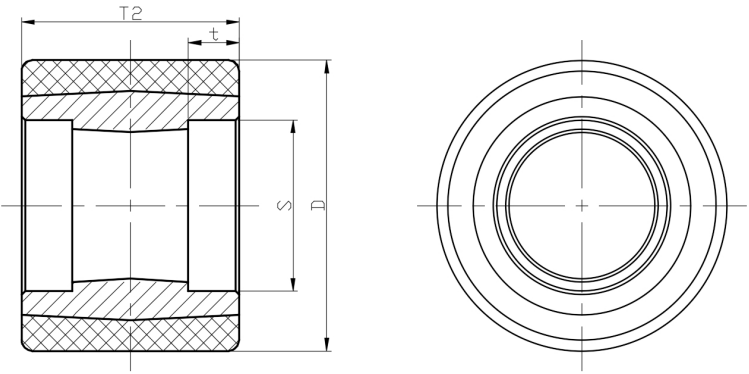
Technical Data

<input checked="" type="radio"/> Imperial <input type="radio"/> Metric	
Wheel Diameter(D)	3-7/16 "
Wheel Width(T2)	3-9/16 "
Wheel Bearing	Without Bearing
Axle Bore(d)	
Axle Bore(S)	1-7/8 "
Bearing Bore Depth(t)	9/16 "
Hardness Of Tread	92±5° Shore A
Load Capacity (Dynamic)	1499lbs
Load Capacity (Static)	2249lbs
Temperature	-4°F to +158°F
Electrical Conductivity	N/A
Anti-Static	N/A
Weight	3.8lbs
Standard	ISO22883

Advantages at a glance

Rolling Resistance	● ● ● ○ ○
Operating Noise	● ● ● ● ○
Floor Surface Preservation	● ● ● ● ○

2D Dimensional Drawing of Single Wheel



\* For any deviation between metric and imperial spec, please refer to the metric spec.