

XPU Series



Wheel Diameter × Wheel Width 85 x 114mm

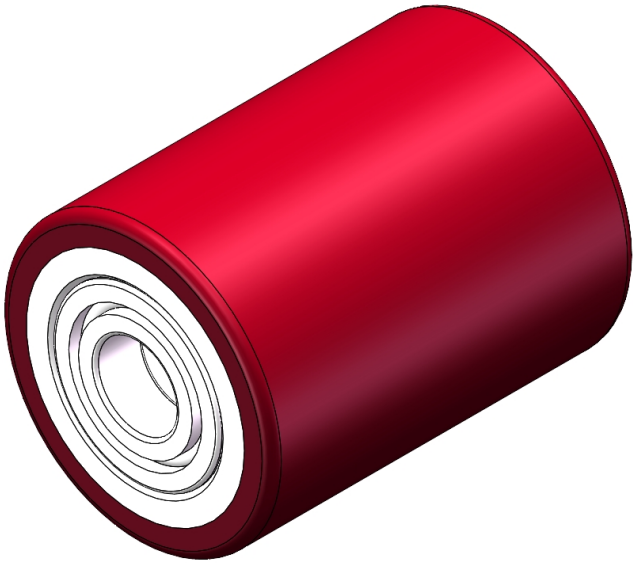
EAN

YJ-12036453480271

Excellent Mechanical Properties, maintaining Heavy Load during high-speed movement; good wear resistance; not easily deformed.  
Excellent resistance to chemicals, solvents, and corrosion.  
Suitable for Forklift Trucks, Electric Stackers, Heavy duty machines, AGVs, and automated industrial applications.  
XPU Burgundy

Wheel Center: Iron core  
Wheel Tread: High-quality polyurethane  
Bearing: Ball bearing

Drawings are for reference only and may differ from the product



Picture may differ from original product

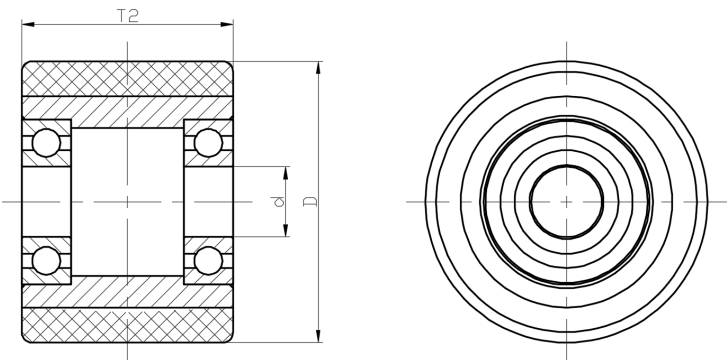
Technical Data

|  |                |
|--|----------------|
| <input checked="" type="radio"/> Metric <input type="radio"/> Imperial |                |
| Wheel Diameter(D)  | 85mm           |
| Wheel Width(T2)  | 114mm          |
| Wheel Bearing  | Ball Bearing   |
| Axle Bore(d)   | 25mm           |
| Axle Bore(S)   | —              |
| Bearing Bore Depth(t)  | —              |
| Hub Lenth(T1)  | —mm            |
| Hardness Of Tread  | 92±5° Shore A  |
| Load Capacity (Dynamic)  | 850kgs         |
| Load Capacity (Static)   | 1275kgs        |
| Temperature  | -20°C to +70°C |
| Electrical Conductivity  | N/A            |
| Anti-Static  | N/A            |
| Weight   | 2.35kgs        |
| Standard   | ISO22883       |

Advantages at a glance

|                            |           |
|----------------------------|-----------|
| Rolling Resistance         | ● ● ● ○ ○ |
| Operating Noise            | ● ● ● ● ○ |
| Floor Surface Preservation | ● ● ● ● ○ |

2D Dimensional Drawing of Single Wheel



\* For any deviation between metric and imperial spec, please refer to the metric spec.