

XPU Series



Wheel Diameter × Wheel Width 85 x 114mm

EAN

YJ-12036453480271

Excellent Mechanical Properties, maintaining Heavy Load during high-speed movement; good wear resistance; not easily deformed.  
Excellent resistance to chemicals, solvents, and corrosion.  
Suitable for Forklift Trucks, Electric Stackers, Heavy duty machines, AGVs, and automated industrial applications.  
XPU Burgundy

Wheel Center: Iron core  
Wheel Tread: High-quality polyurethane  
Bearing: Ball bearing

Drawings are for reference only and may differ from the product



Picture may differ from original product

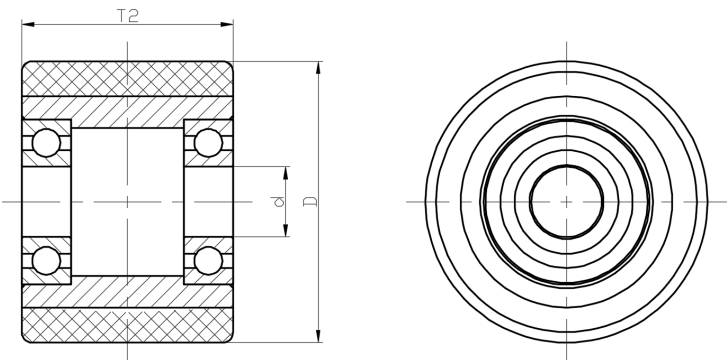
Technical Data

<input checked="" type="radio"/> Imperial <input type="radio"/> Metric	
Wheel Diameter(D)	3-7/16 "
Wheel Width(T2)	4-1/2
Wheel Bearing	Ball Bearing
Axle Bore(d)	1 "
Axle Bore(S)	—
Bearing Bore Depth(t)	—
Hub Lenth(T1)	—
Hardness Of Tread	92±5° Shore A
Load Capacity (Dynamic)	1874lbs
Load Capacity (Static)	2811lbs
Temperature	-4°F to +158°F
Electrical Conductivity	N/A
Anti-Static	N/A
Weight	5.2lbs
Standard	ISO22883

Advantages at a glance

Rolling Resistance	● ● ● ○ ○
Operating Noise	● ● ● ● ○
Floor Surface Preservation	● ● ● ● ○

2D Dimensional Drawing of Single Wheel



\* For any deviation between metric and imperial spec, please refer to the metric spec.