

XPU Series



Wheel Diameter × Wheel Width 75 x 29mm

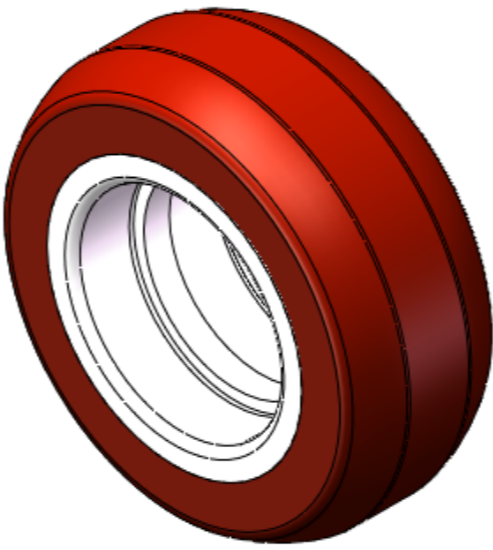
EAN

YJ-12037003130100

Excellent Mechanical Properties, maintaining Heavy Load during high-speed movement; good wear resistance; not easily deformed.
Excellent resistance to chemicals, solvents, and corrosion.
Suitable for Forklift Trucks, Electric Stackers, Heavy duty machines, AGVs, and automated industrial applications.
XPU Burgundy, Curved Wheel Surface

Wheel Tread: Aluminum core
Wheel Center: High-quality polyurethane
Bearings: —

Drawings are for reference only and may differ from the product



Picture may differ from original product

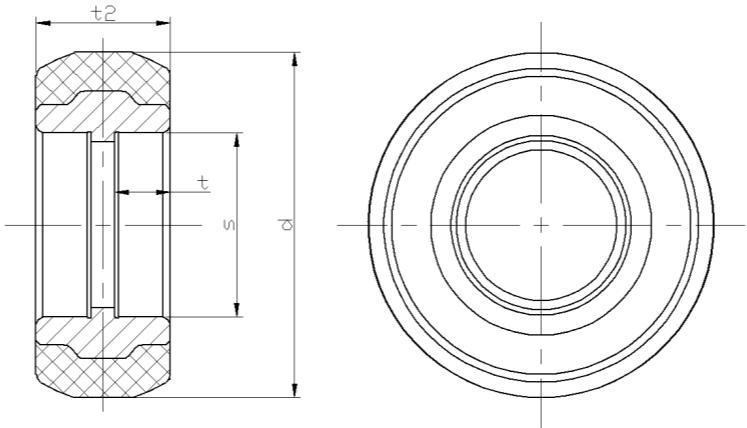
Technical Data

| | |
|--|-----------------|
| <input checked="" type="radio"/> Metric <input type="radio"/> Imperial | |
| Wheel Diameter(D) | 75mm |
| Wheel Width(T2) | 29mm |
| Wheel Bearing | Without Bearing |
| Axle Bore(d) | — |
| Axle Bore(S) | 40mm |
| Bearing Bore Depth(t) | 12mm |
| Hub Lenth(T1) | 29mm |
| Hardness Of Tread | 92±5° Shore A |
| Load Capacity (Dynamic) | 270kgs |
| Load Capacity (Static) | 450kgs |
| Temperature | -20°C to +70°C |
| Electrical Conductivity | N/A |
| Anti-Static | N/A |
| Weight | 0.15kgs |
| Standard | ISO22883 |

Advantages at a glance

| | |
|----------------------------|-----------|
| Rolling Resistance | ● ● ● ○ ○ |
| Operating Noise | ● ● ● ● ○ |
| Floor Surface Preservation | ● ● ● ● ○ |

2D Dimensional Drawing of Single Wheel



* For any deviation between metric and imperial spec, please refer to the metric spec.