

HPU Series

Wheel Diameter × Wheel Width 150 x 40mm

EAN

YJ-12037706186179

Excellent Mechanical Properties and wear resistance  
Excellent resistance to chemicals and corrosion  
Suitable for Forklift Trucks, Electric Stackers, AGVs, and floor scrubbers  
HPU, orange-yellow, machined diamond + vertical textured surface  
Increases grip on the ground, effectively improving anti-slip ability

Wheel Center: cast iron core  
Wheel Tread: High-quality polyurethane

Product descriptions are for reference only. The actual product shall prevail.



Picture may differ from original product

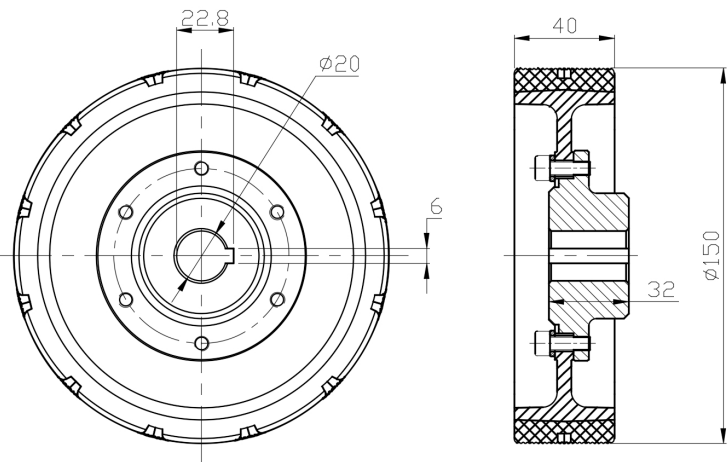
Technical Data

<input checked="" type="radio"/> Metric <input type="radio"/> Imperial	
Wheel Diameter (D)	150mm
Wheel Width (T2)	40mm
Wheel installation — Hub Lenth (T1)	32mm
Wheel Mounting Bore Diameter	20mm
Keyway Width	6mm
Wheel Keyway Depth (H)	22.8mm
Load Capacity (Static)	1350kgs
Load Capacity at 4 km/h	900kgs
Load Capacity at 6 km/h	765kgs
Load Capacity at 10 km/h	630kgs
Load Capacity at 16 km/h	360kgs
Hardness Of Tread	92±5° Shore A
Temperature	-20°C to +70°C
Tread Pattern	Diamond pattern + vertical stripe
Wheel centre/ rim	Iron core/galvanized
Non-Marking	Y
Conductive	N/A
Anti	N/A
Weight	2.04kgs
Standard	ISO22883

Advantages at a glance

Rolling Resistance	● ● ● ● ●
Operating Noise	● ● ● ● ●
Floor Surface Preservation	● ● ● ● ●

2D Dimensional Drawing of Drive Wheel



\* For any deviation between metric and imperial spec, please refer to the metric spec.