

# HPU Series



Wheel Diameter × Wheel Width 200 x 59mm

EAN

YJ-12037708200304



Picture may differ from original product

Product descriptions are for reference only. The actual product shall prevail.

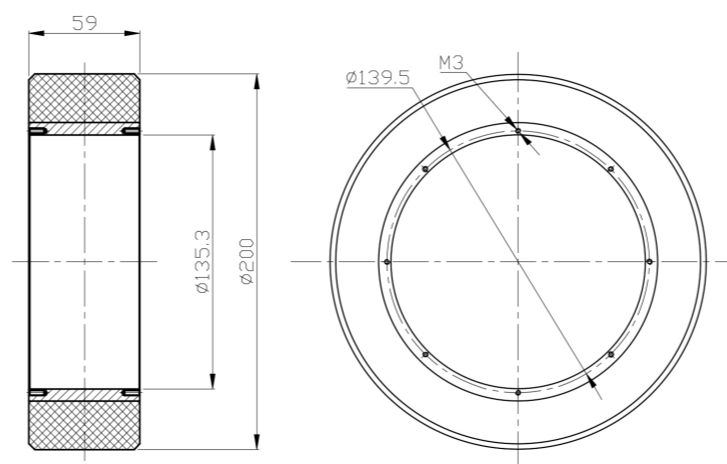
## Technical Data

<input checked="" type="radio"/> Metric <input type="radio"/> Imperial	
Wheel Diameter (D)	200mm
Wheel Width (T2)	59mm
Wheel installation — Hub Lenth (T1)	—
Wheel center-bore diameter (d)	135.3mm
Wheel Mounting Bolt Hole PCD Diameter	—
Wheel Mounting Bolt Hole PCD	139.5mm
# Of Wheel mounting bolt boles	—
Wheel mounting bolt hole (M)	3
Number of wheel mounting bolt holes	8
Load Capacity (Static)	1350kgs
Load Capacity at 4 km/h	900kgs
Load Capacity at 6 km/h	765kgs
Load Capacity at 10 km/h	630kgs
Load Capacity at 16 km/h	360kgs
Hardness Of Tread	92±5° Shore A
Temperature	-20°C to +70°C
Tread Pattern	—
Wheel centre/ rim	—
Non-Marking	Y
Conductive	N/A 10 <sup>8</sup> /Ω ~10 <sup>11</sup> /Ω
Anti	N/A
Weight	2.39kgs
Standard	ISO22883

## Advantages at a glance

Rolling Resistance	● ● ● ● ●
Operating Noise	● ● ● ● ●
Floor Surface Preservation	● ● ● ● ●

## 2D Dimensional Drawing of Drive Wheel



\* For any deviation between metric and imperial spec, please refer to the metric spec.