

HPU Series



Wheel Diameter × Wheel Width 200 x 59mm

EAN

YJ-12037708200304



Picture may differ from original product

Product descriptions are for reference only. The actual product shall prevail.

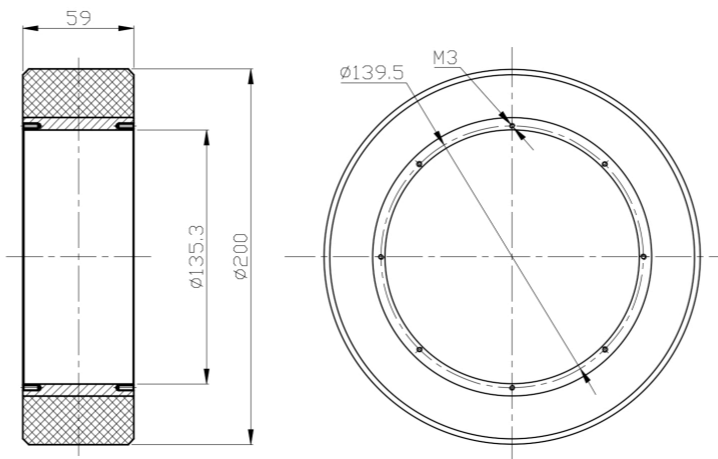
Technical Data

<input checked="" type="radio"/> Imperial <input type="radio"/> Metric	
Wheel Diameter (D)	8 "
Wheel Width (T2)	2-3/8
Wheel installation — Hub Lenth (T1)	—
Wheel center-bore diameter (d)	5-7/16 "
Wheel Mounting Bolt Hole PCD Diameter	—
Wheel Mounting Bolt Hole PCD	5-1/2 "
# Of Wheel mounting bolt boles	—
Wheel mounting bolt hole (M)	3
Number of wheel mounting bolt holes	8
Load Capacity (Static)	2976lbs
Load Capacity at 4 km/h	1984lbs
Load Capacity at 6 km/h	1687lbs
Load Capacity at 10 km/h	1389lbs
Load Capacity at 16 km/h	794lbs
Hardness Of Tread	92±5° Shore A
Temperature	-4°F to +158°F
Tread Pattern	—
Wheel centre/ rim	
Non-Marking	Y
Conductive	N/A 10 ⁸ Ω ~10 ¹¹ Ω
Anti	N/A
Weight	5.3lbs
Standard	ISO22883

Advantages at a glance

Rolling Resistance	● ● ● ● ●
Operating Noise	● ● ● ● ●
Floor Surface Preservation	● ● ● ● ●

2D Dimensional Drawing of Drive Wheel



* For any deviation between metric and imperial spec, please refer to the metric spec.