



QPU Series

Wheel Diameter × Wheel Width 130 x 35mm

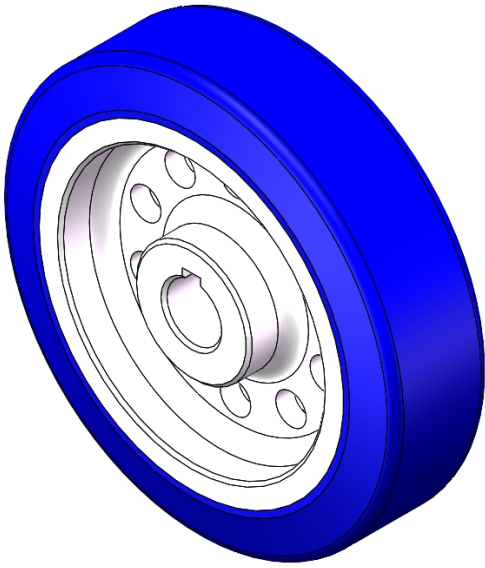
EAN

YJ-12038405130104

It has good elasticity, reduces pushing resistance, improves machine controllability, and has good wear resistance.
It has excellent Hydrolysis Resistance.
Suitable for tropical regions and humid working environments.
QPU Blue

Wheel Center: Aluminum core
Wheel Tread: High-quality polyurethane

Product descriptions are for reference only. The actual product shall prevail.



Picture may differ from original product

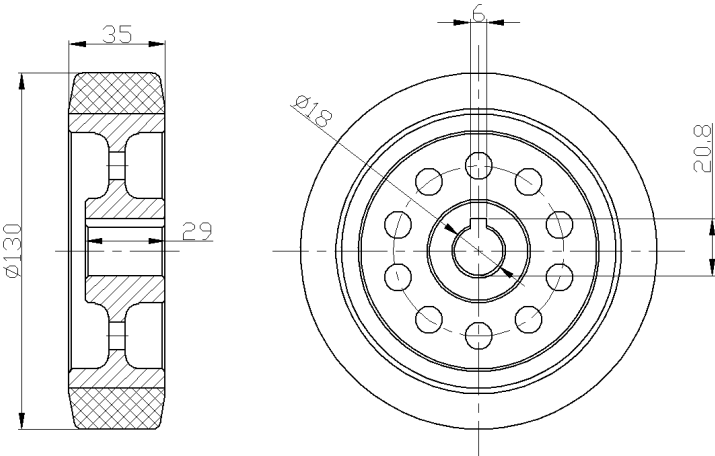
Technical Data

<input checked="" type="radio"/> Metric <input type="radio"/> Imperial	
Wheel Diameter (D)	130mm
Wheel Width (T2)	35mm
Wheel installation — Hub Lenth (T1)	29mm
Wheel Mounting Bore Diameter	18mm
Keyway Width	6mm
Wheel Keyway Depth (H)	20.8mm
Load Capacity (Static)	534kgs
Load Capacity at 4 km/h	356kgs
Load Capacity at 6 km/h	302kgs
Load Capacity at 10 km/h	249kgs
Load Capacity at 16 km/h	102kgs
Hardness Of Tread	87±5° Shore A
Temperature	-20°C to +70°C
Tread Pattern	—
Wheel centre/ rim	Aluminum core/anode
Non-Marking	Y
Conductive	N/A
Anti	N/A
Weight	0.53kgs
Standard	ISO22883

Advantages at a glance

Rolling Resistance	● ● ● ● ●
Operating Noise	● ● ● ● ●
Floor Surface Preservation	● ● ● ● ●

2D Dimensional Drawing of Drive Wheel



* For any deviation between metric and imperial spec, please refer to the metric spec.