

QPU Series

Wheel Diameter × Wheel Width 130 x 35mm

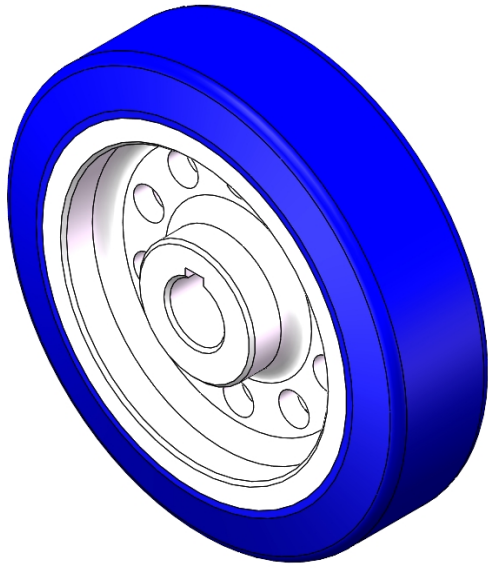
EAN

YJ-12038405130104

It has good elasticity, reduces pushing resistance, improves machine controllability, and has good wear resistance.
It has excellent Hydrolysis Resistance.
Suitable for tropical regions and humid working environments.
QPU Blue

Wheel Center: Aluminum core
Wheel Tread: High-quality polyurethane

Product descriptions are for reference only. The actual product shall prevail.



Picture may differ from original product

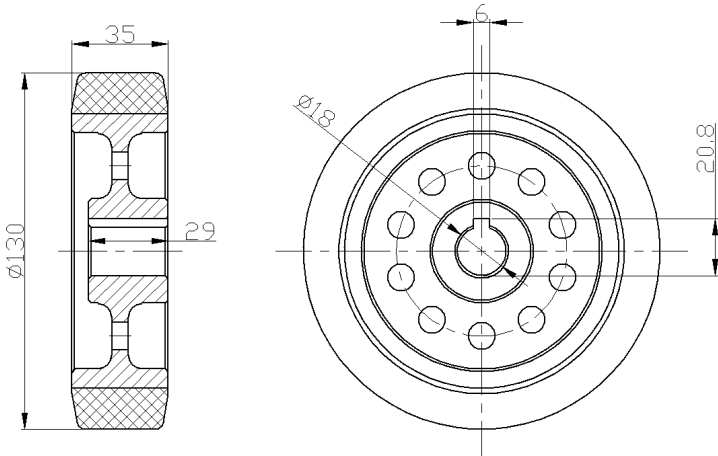
Technical Data

<input checked="" type="radio"/> Imperial <input type="radio"/> Metric	
Wheel Diameter (D)	5 "
Wheel Width (T2)	1-7/16 "
Wheel installation — Hub Lenth (T1)	1-3/16 "
Wheel Mounting Bore Diameter	3/4 "
Keyway Width	1/4 "
Wheel Keyway Depth (H)	20.8
Load Capacity (Static)	1177lbs
Load Capacity at 4 km/h	785lbs
Load Capacity at 6 km/h	666lbs
Load Capacity at 10 km/h	549lbs
Load Capacity at 16 km/h	102kgs
Hardness Of Tread	87±5° Shore A
Temperature	-4°F to +158°F
Tread Pattern	—
Wheel centre/ rim	Aluminum core/anode
Non-Marking	Y
Conductive	N/A
Anti	N/A
Weight	1.2lbs
Standard	ISO22883

Advantages at a glance

Rolling Resistance	● ● ● ● ●
Operating Noise	● ● ● ● ●
Floor Surface Preservation	● ● ● ● ●

2D Dimensional Drawing of Drive Wheel



* For any deviation between metric and imperial spec, please refer to the metric spec.