



QPU Series

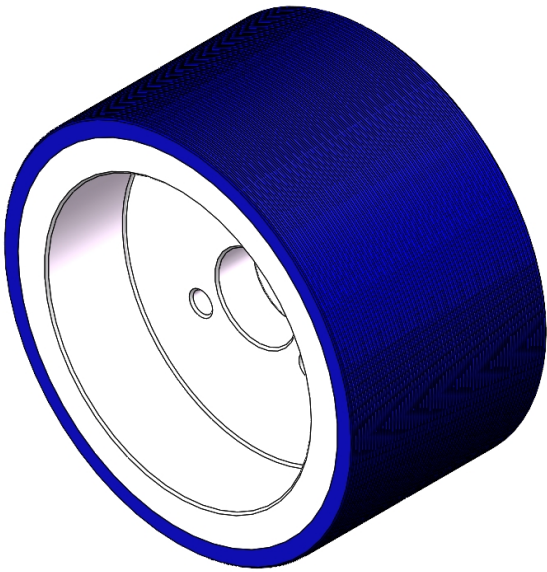
Wheel Diameter × Wheel Width 180 x 100mm

EAN

YJ-12038407400100

Good elasticity, reduces pushing resistance, improves machine controllability, and has good wear resistance.  
Excellent Hydrolysis Resistance.  
Suitable for tropical regions and humid working environments.  
QPU, blue, with machined straight-grained surface.  
Increases grip on the ground and effectively improves anti-slip ability.

Wheel Center: Aluminum core  
Wheel Tread: High-quality polyurethane



Picture may differ from original product

Product descriptions are for reference only. The actual product shall prevail.

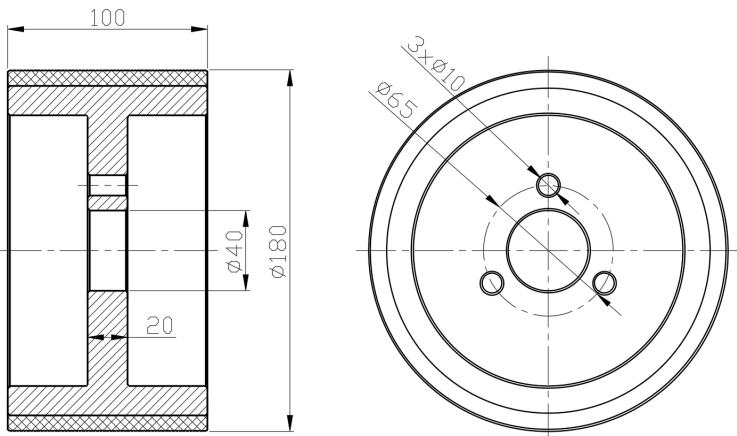
Technical Data

<input checked="" type="radio"/> Metric <input type="radio"/> Imperial	
Wheel Diameter (D)	180mm
Wheel Width (T2)	100mm
Wheel installation — Hub Lenth (T1)	20mm
Wheel center-bore diameter (d)	40mm
Wheel Mounting Bolt Hole PCD Diameter	10mm
Wheel Mounting Bolt Hole PCD	65mm
# Of Wheel mounting bolt boles	3
Wheel mounting bolt hole (M)	—
Number of wheel mounting bolt holes	—
Load Capacity (Static)	1500kgs
Load Capacity at 4 km/h	1000kgs
Load Capacity at 6 km/h	850kgs
Load Capacity at 10 km/h	700kgs
Load Capacity at 16 km/h	400kgs
Hardness Of Tread	87±5° Shore A
Temperature	-20°C to +70°C
Tread Pattern	Straight lines
Wheel centre/ rim	Aluminum core/anode
Non-Marking	Y
Conductive	N/A
Anti	N/A
Weight	3.03kgs
Standard	ISO22883

Advantages at a glance

Rolling Resistance	● ● ● ● ●
Operating Noise	● ● ● ● ●
Floor Surface Preservation	● ● ● ● ●

2D Dimensional Drawing of Drive Wheel



\* For any deviation between metric and imperial spec, please refer to the metric spec.