



QPU Series

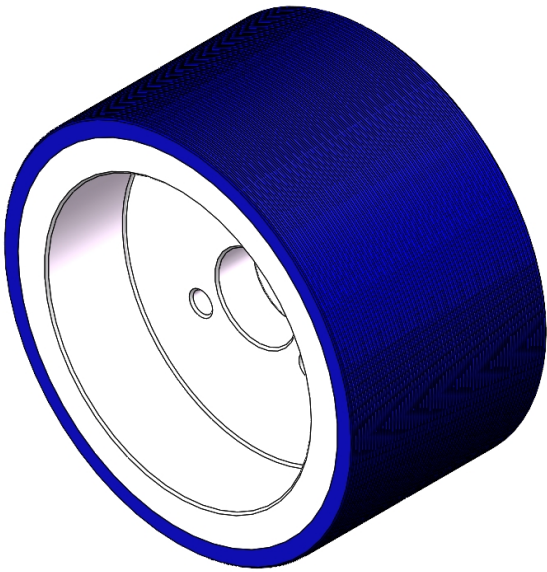
Wheel Diameter × Wheel Width 180 x 100mm

EAN

YJ-12038407400100

Good elasticity, reduces pushing resistance, improves machine controllability, and has good wear resistance.
Excellent Hydrolysis Resistance.
Suitable for tropical regions and humid working environments.
QPU, blue, with machined straight-grained surface.
Increases grip on the ground and effectively improves anti-slip ability.

Wheel Center: Aluminum core
Wheel Tread: High-quality polyurethane



Picture may differ from original product

Product descriptions are for reference only. The actual product shall prevail.

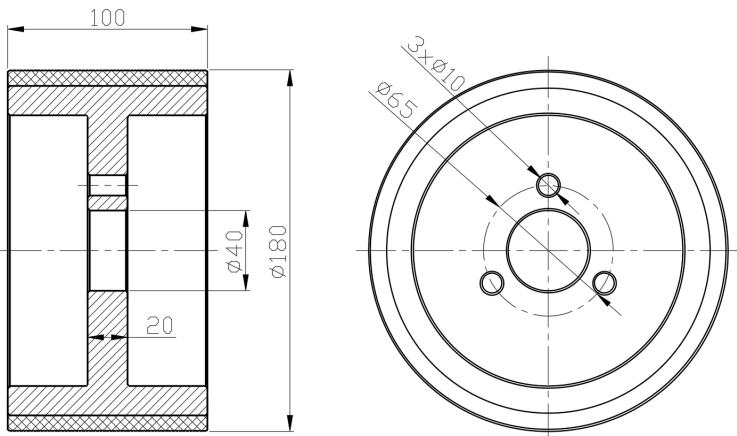
Technical Data

<input checked="" type="radio"/> Imperial <input type="radio"/> Metric	
Wheel Diameter (D)	7-1/8 "
Wheel Width (T2)	4 "
Wheel installation — Hub Lenth (T1)	20mm
Wheel center-bore diameter (d)	1-5/8 "
Wheel Mounting Bolt Hole PCD Diameter	3/8 "
Wheel Mounting Bolt Hole PCD	2-9/16 "
# Of Wheel mounting bolt boles	3
Wheel mounting bolt hole (M)	—
Number of wheel mounting bolt holes	—
Load Capacity (Static)	3307lbs
Load Capacity at 4 km/h	2205lbs
Load Capacity at 6 km/h	1874lbs
Load Capacity at 10 km/h	1543lbs
Load Capacity at 16 km/h	400kgs
Hardness Of Tread	87±5° Shore A
Temperature	-4°F to +158°F
Tread Pattern	直纹
Wheel centre/ rim	Aluminum core/anode
Non-Marking	Y
Conductive	N/A
Anti	N/A
Weight	6.7lbs
Standard	ISO22883

Advantages at a glance

Rolling Resistance	● ● ● ● ●
Operating Noise	● ● ● ● ●
Floor Surface Preservation	● ● ● ● ●

2D Dimensional Drawing of Drive Wheel



* For any deviation between metric and imperial spec, please refer to the metric spec.