

NMBR Series



Wheel Diameter × Wheel Width 300 x 76mm

EAN

YJ-12041112309101

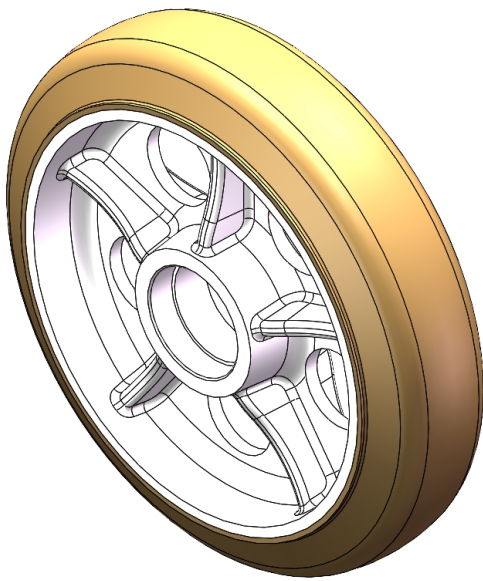
Made from High-Quality, elastic, non-greasy, environmentally friendly rubber. Features high Resilient, providing excellent Floor Surface Preservation, Shock-Absorbing, and noise reduction. The non-greasy rubber Non-Markings when walked on. Suitable for any surface. Natural rubber color, Wheel Tread profile: Crown.

Wheel Center: cast iron core

Outer packaging: rubber

Bearings: —

Drawings are for reference only and may differ from the product



Picture may differ from original product

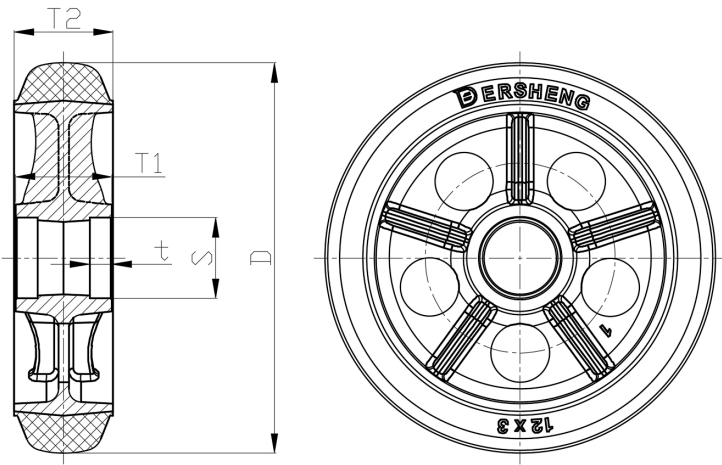
Technical Data

<input checked="" type="radio"/> Imperial <input type="radio"/> Metric	
Wheel Diameter(D)	11-13/16 "
Wheel Width(T2)	3 "
Wheel Bearing	Without Bearing
Axle Bore(d)	—
Axle Bore(S)	2-1/2 "
Bearing Bore Depth(t)	11/16 "
Hub Lenth(T1)	3 "
Hardness Of Tread	60±5° Shore A
Load Capacity (Dynamic)	1543lbs
Load Capacity (Static)	2315lbs
Temperature	-4°F to +176°F
Electrical Conductivity	N/A
Anti-Static	N/A
Weight	21.0lbs
Standard	ISO22883

Advantages at a glance

Rolling Resistance	● ● ● ○ ○
Operating Noise	● ● ● ● ○
Floor Surface Preservation	● ● ● ● ○

2D Dimensional Drawing of Single Wheel



* For any deviation between metric and imperial spec, please refer to the metric spec.