

1129 Series



PPR wheel(Pearlescent dark gray) wheel diameter × wheel width 75 x 31mm

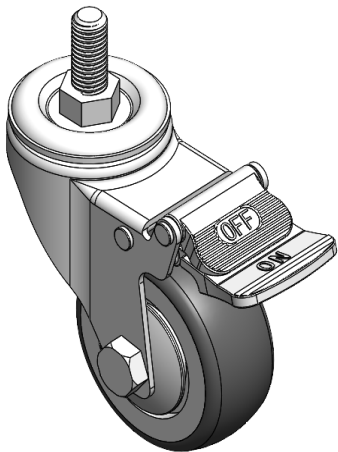
EAN

YJ-X11290300266013

Castors with double brake and locking system. Thread-Riveted Stamping Tripod—1/2"-12 tooth
Galvanized surface, threaded installation device
Impact-resistant polypropylene wheel core, thermoplastic elastomer (TPR) wheel tread
Pearlite dark grey, wheel bearings – precision ball bearings.

Wheel tread: Thermoplastic rubber elastomer (TPR)
Wheel core: Made of high-quality impact-resistant polypropylene

Product descriptions are for reference only. The actual product shall prevail.



Picture may differ from original product

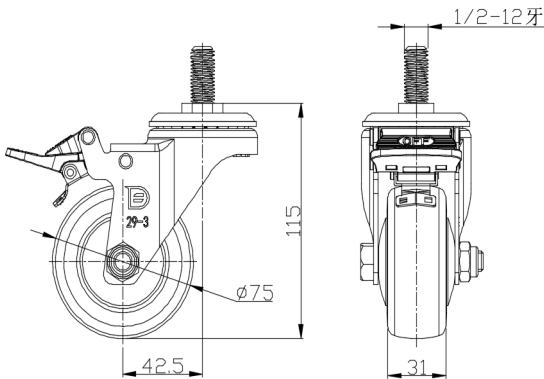
Technical Data

<input checked="" type="radio"/> Metric <input type="radio"/> Imperial	
Wheel Diameter	75mm
Wheel Width	31mm
Wheel Bearing	wheel equipped with ball bearings
Thread Specifications	1/2 " -12牙
thread length	27.5mm
Offset	42.5mm
Swivel Interference	210mm
Overall height	115mm
Swivel Radius	105mm
Hardness of tread	82±5° Shore A
Load capacity (dynamic)	70kgs
Load capacity (static)	105kgs
Temperature	-20°C to +60°C
Stand Style	Double Elimination
Stainless steel	N/A
Conductive	N/A
Anti	N/A
Weight	0.57kgs
Standard	ISO22883

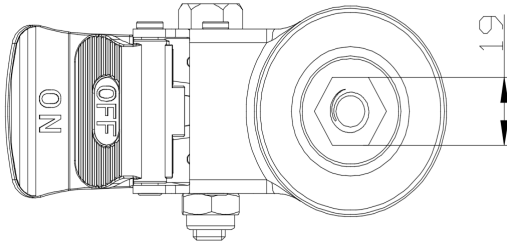
Advantages at a glance

Rolling Resistance	● ● ● ● ○
Operating Noise	● ● ● ● ○
Floor Surface Preservation	● ● ● ● ●

Dimensions



Mounting



Drawings are for reference only and may differ from the product

* For any deviation between metric and imperial spec, please refer to the metric spec.