



1129 Medical Caster Series

PPR E-Conductive (black-gray) Wheel Diameter × Wheel Width 100 x 31mm

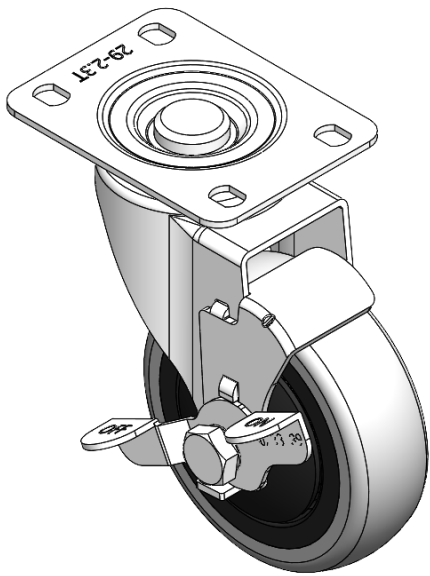
EAN

YJ-X11290400174013

Castors with Side Brakes, Locking system. Top Plate Riveted Fork – High-grade holes Surface zinc-plated, Top Plate Mounting Type High-quality Impact Resistance Polypropylene Wheel Center,High-Quality Thermoplastic Rubber (TPR) Wheel Tread Black grey, Bearing – Ball Bearing.

Wheel tread: Thermoplastic rubber elastomer (TPR)
Wheel Center: Made of high-quality impact-resistant polypropylene

Drawings are for reference only and may differ from the product



Picture may differ from original product

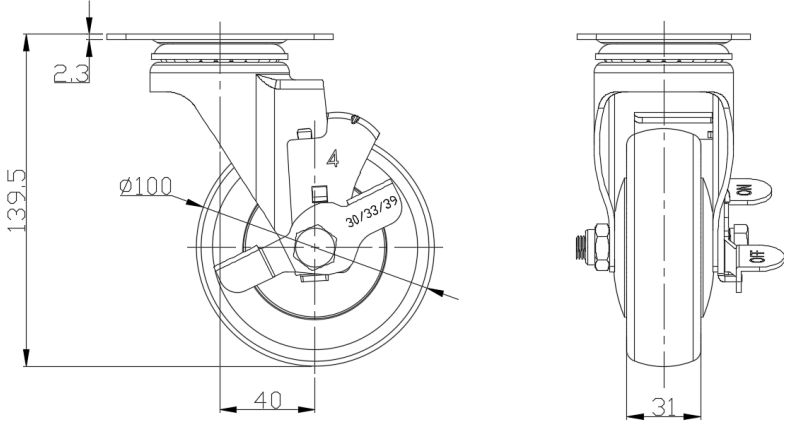
Technical Data

<input checked="" type="radio"/> Metric <input type="radio"/> Imperial	
Wheel Diameter	100mm
Wheel Width	31mm
Wheel Bearing	Wheels With Ball Bearings
Plate Size	95 x 72.5mm
Bolt Hole Spacing	75 x 45mm
Plate Hole	11.3 x 8.8mm
Offset	40mm
Swivel Interference	180mm
Overall Height	139.5mm
Swivel Radius	90mm
Hardness Of Tread	82±5° Shore A
Load Capacity (Dynamic)	100kgs
Load Capacity (Static)	150kgs
Temperature	-20°C to +60°C
Fork Type	Swivel Caster With Side Brake
Stainless	N/A
Electrical Conductivity	Y 导电值：10^3~10^5
Anti-Static	N/A
Weight	0.78kgs
Standard	ISO22883

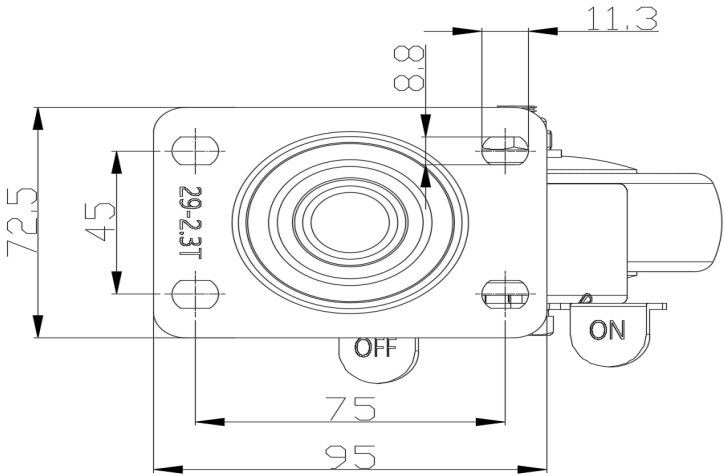
Advantages at a glance

Rolling Resistance	● ● ● ● ○
Operating Noise	● ● ● ● ○
Floor Surface Preservation	● ● ● ● ●

Dimensions



Mounting



* For any deviation between metric and imperial spec, please refer to the metric spec.