

1129 Series

Classic PPR wheel(Medium tube type) (Pearlescent dark gray) wheel diameter × wheel width 100 x 31mm

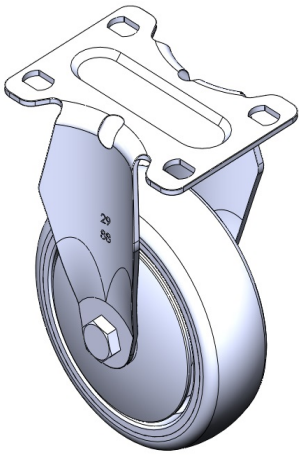
EAN

YJ-X11290400261023

Fixed castors, one-piece stamped footrest - advanced holes
Galvanized surface, base plate installation
Impact-resistant polypropylene wheel core, thermoplastic elastomer (TPR) wheel tread
Dark grey, wheel bearings – precision ball.

Wheel tread: Thermoplastic rubber elastomer (TPR)
Wheel core: Made of high-quality impact-resistant polypropylene

Product descriptions are for reference only. The actual product shall prevail.



Picture may differ from original product

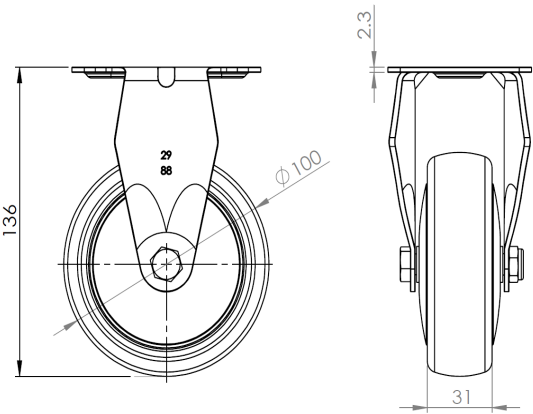
Technical Data

<input checked="" type="radio"/> Metric <input type="radio"/> Imperial	
Wheel Diameter	100mm
Wheel Width	30mm
Wheel Bearing	wheels with a central tube
Plate size	92 x 70mm
Base plate hole spacing	75 x 45mm
Plate hole	12 x 9mm
Overall height	13mm
Hardness of tread	82±5° Shore A
Load capacity (dynamic)	80kgs
Load capacity (static)	120kgs
Temperature	-20°C to +60°C
Stand Style	activity
Stainless steel	N/A
Conductive	N/A
Anti	N/A
Weight	0.48kgs
Standard	ISO22883

Advantages at a glance

Rolling Resistance	● ● ● ● ○
Operating Noise	● ● ● ● ○
Floor Surface Preservation	● ● ● ● ●

Dimensions



Mounting

