

[◀ Back](#)[Product Data Sheet](#)[3D image files](#)

Product data sheet

1129 Series

PPR wheel wheel diameter × wheel width 75 x 31mm

EAN

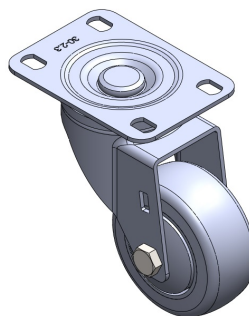
TW-4112903002001

Movable casters, base plate riveted stamping tripod - advanced holes
Surface plating, bottom plate mounting device
Impact-resistant polypropylene wheel core, thermoplastic elastomer (TPR) wheel surface
Dark grey, wheel bearing - precision ball.

Wheel surface: thermoplastic rubber elastomer (TPR)

Wheel core: Made of high-quality impact-resistant polypropylene

Product descriptions are for reference only. The actual product shall prevail.



Picture may differ from original product

Technical Data

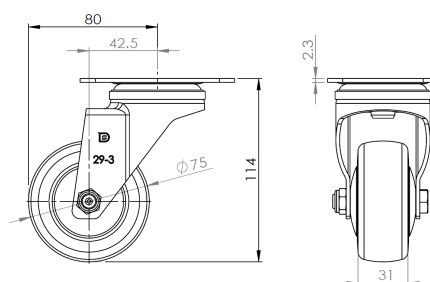
☒ Metric ☐ Imperial

Wheel Diameter	75mm
Wheel Width	31mm
Wheel Bearing	wheel equipped with ball bearings
Plate size	96 x 69mm
Base plate hole spacing	75 x 45mm 高級孔
Plate hole	13 x 9mm
Offset	42.5mm
Swivel Interference	160mm
Overall height	114mm
Swivel Radius	80mm
Hardness of tread	82±5° Shore A
Load capacity (dynamic)	70kgs
Load capacity (static)	105kgs
Temperature	-20°C to +60°C
Stand Style	activity
Stainless steel	N/A
Conductive	N/A
Anti	N/A
Weight	0.60kgs
Standard	ISO22883

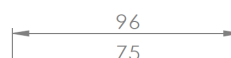
Advantages at a glance

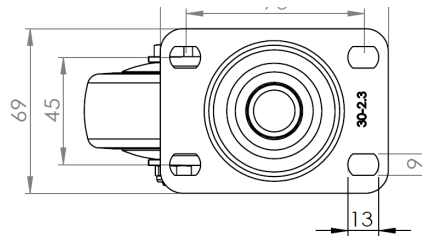
Rolling Resistance	● ● ● ● ○
Operating Noise	● ● ● ● ○
Floor Surface Preservation	● ● ● ● ●

Dimensions



Mounting





Drawings are for reference only and may differ from the product.

* For any deviation between metric and imperial spec, please refer to the metric spec.

© All rights reserved 2025 Deshang Shanghaolun www.dersheng.com